



# Roxtec HD BG™ transits

High cable density transit devices for bonding and grounding.

The Roxtec HD BG™ are cable entry devices for sealing, bonding and grounding of armored and metal-clad cable in harsh and hazardous environments, available in three different sizes. The cable transit allows up to 32 cables per opening. It has a 316L stainless steel frame and Roxtec BG™ sealing modules which are adaptable to a variety of cable sizes.



- Rodent resistant
- Corrosion resistant
- Light-weight
- Area efficient
- Allows pre-terminated cables

## Product characteristics



IP/UL NEMA



Electrical safety

## Structure of installation



Cabinets & enclosures

## Ratings & certificates

### Tightness

- IP 66/67, UL/NEMA 4,4X,12,13

### Supports

- Bonding and grounding

## Frame dimensions

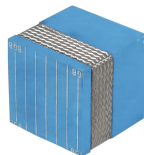
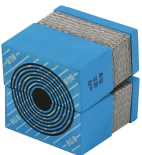
mm/kg

The frame variants below are a limited selection. For the full range of frames and configurations, please visit [roxtec.com](https://www.roxtec.com).

Product	Frame openings	Packing space	External dimensions WxHxD	Aperture dimensions w x h	Weight	Art. no
HD 16 FRAME ASSEMBLY AISI 316	1	40 x 160	83.8 x 236 x 60	64(+1/-0.5) x 216(+1/-0.5)	1.6	193084
HD 32 FRAME ASSEMBLY AISI316	2	40 x 160	130 x 236 x 60	110(+1/-0.5) x 216(+1/-0.5)	2.3	109238

## Sealing components

### Sealing components



CM BG™ module with Multidiameter™ CM BG™ solid compensation module

Lubricant

For detailed information, please visit [roxtec.com](https://www.roxtec.com).



# Pre-configured transit kits

mm/kg



HD 16/16 BG



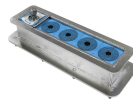
HD 32/8 BG B KIT



HD 32/32 BG B KIT



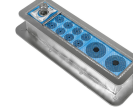
HDLC/24+2 BG



HD 16/4 BG



HD 32/20 BG B KIT



HD 16/10 BG

Product	Configuration	External dimensions WxHxD	Aperture dimensions w x h	Weight	Art. no
HD 16/16 BG	16x (3.5-16.5)	83.8 x 236 x 60	64(+1/-0.5) x 216(+1/-0.5)	2	193104
HD 32/8 BG B KIT	8x (9.5-32.5)	130 x 236 x 60	110(+1/-0.5) x 216(+1/-0.5)	3.3	120373
HD 32/32 BG B KIT	32x (3.5-16.5)	130 x 236 x 60	110(+1/-0.5) x 216(+1/-0.5)	3.5	120374
HDLC/24+2 BG	2x (24.0-54.0), 24x (3.5-16.5)	378 x 120 x 94	366(+1/-1) x 108(+1/-1)	5.6	173280
HD 16/4 BG	4x (9.5-32.5)	83.8 x 236 x 60	64(+1/-0.5) x 216(+1/-0.5)	2	193105
HD 32/20 BG B KIT	4x (9.5-32.5), 16x (3.5-16.5)	130 x 236 x 60	110(+1/-0.5) x 216(+1/-0.5)	3.4	120376
HD 16/10 BG	2x (9.5-32.5), 8x (3.5-16.5)	83.8 x 236 x 60	64(+1/-0.5) x 216(+1/-0.5)	2	198299

The product information provided by Roxtec does not release the purchaser of the Roxtec system, or part thereof, from the obligation to independently determine the suitability of the products for the intended process, installation and/or use.

Roxtec gives no guarantee for the Roxtec system or any part thereof and assumes no liability for any loss or damage whatsoever, whether direct, indirect, consequential, loss of profit or otherwise, occurred or caused by the Roxtec systems or installations containing components not manufactured by an authorized manufacturer and/or occurred or caused by the use of the Roxtec system in a manner or for an application other than for which the Roxtec system was designed or intended.

Roxtec expressly excludes any implied warranties of merchantability and fitness for a particular purpose and all other express or implied representations and warranties provided by statute or common law. User determines suitability of the Roxtec system for intended use and assumes all risk and liability in connection therewith. In no event shall Roxtec be liable for indirect, consequential, punitive, special, exemplary or incidental damages or losses.

The Roxtec products are offered and sold in accordance with the conditions of the Roxtec General Terms of Sales. The latest version of the Roxtec General Terms of Sales can be downloaded from <https://www.roxtec.com/en/about-us/about-roxtec/general-terms-of-sales/>

We reserve the right to make changes to the product and technical information without further notice. Any errors in print or entry are no claims for indemnity. The content of this publication is the property of Roxtec International AB and is protected by copyright.

This document was generated on: 2024-04-23